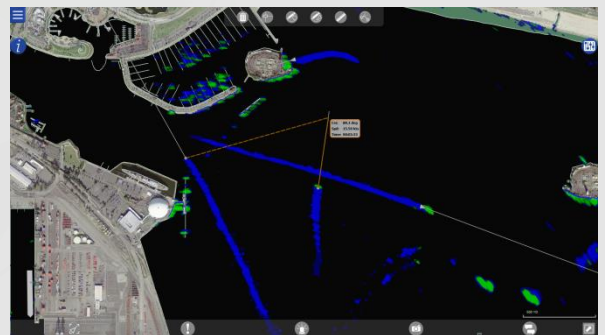
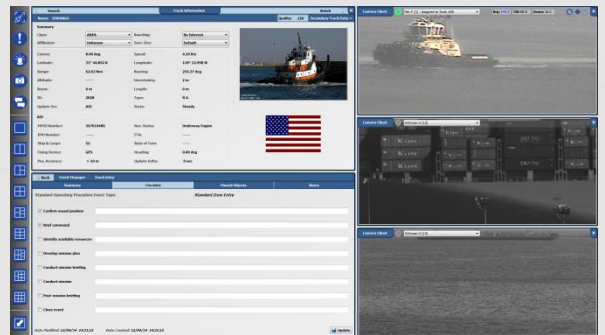
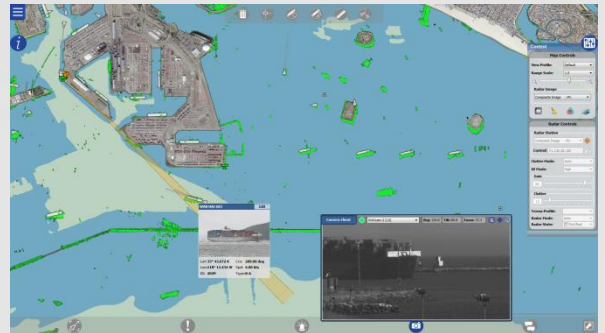


The *Radii* situational awareness display presents an integrated view of the operational area, enables situation management by providing automated analytics and decision support tools, and provides control of the underlying radar and sensor systems.

Features of Radii include:

- ✓ **Flexible User Interface**
 - ✓ Highly customizable user interface
 - ✓ Single screen and multi-screen operating modes
 - ✓ Native language and localization support
- ✓ **Sensor Integration, Display and Control**
 - ✓ High-resolution composite radar image
 - ✓ Enhanced satellite and nautical chart image blending
 - ✓ Control and management of underlying radar and sensor systems
- ✓ **Automated Tracking and Anomaly Detection**
 - ✓ Presents real-time tracking, data analysis and anomaly detection information
 - ✓ Continually expanding set of operator support tools
- ✓ **Event Management**
 - ✓ Collaborative event management support
 - ✓ Customizable standard operating procedures
- ✓ **On-Demand Information Access**
 - ✓ Integrated Maritime Information Server access
 - ✓ Embedded recorder playback capability



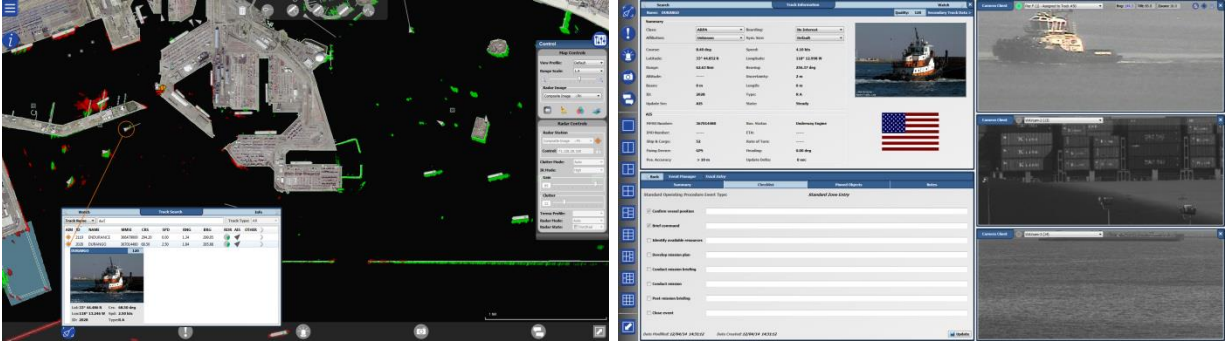


Technical Data – Radii

Ordering Options

Available as a single operator workstation or multi-user web-accessible server

Provided as a 2U rackmount unit, desktop unit, or software package; all Windows OS compatible.



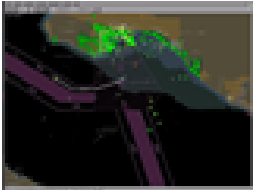
Dual-monitor setup allows for workspace optimization.

Radii / RDOP Comparison

Radii is available as an upgrade option to current system users and is the primary interface for all future land-based installations and is backwards-compatible with existing SSR systems.

Feature	RDOP	Radii
Composite Radar Image Display	Green	Green
Radar and Sensor Management	Green	Green
Track Management	Green	Green
LAR Recorder Playback	Green	Green
Anomaly Detection and Alerting	Yellow	Green
Camera Image Display	Yellow	Green
Satellite & Chart Image Blending	Yellow	Green
Operator Support Tools	Yellow	Green
Customizable User Interface	Red	Green
Multi-Screen Support	Red	Green
Event Management	Red	Green
Maritime Information Server Access	Red	Green
Native Language Support	Red	Green

RDOP



Radii



SSR Engineering, Inc.
 2556 West Woodland Drive
 Anaheim, California 92801
 Tel +1.714.229.9020
 Fax +1.714.229.9015
 Email info@ssreng.com
 www.ssreng.com

